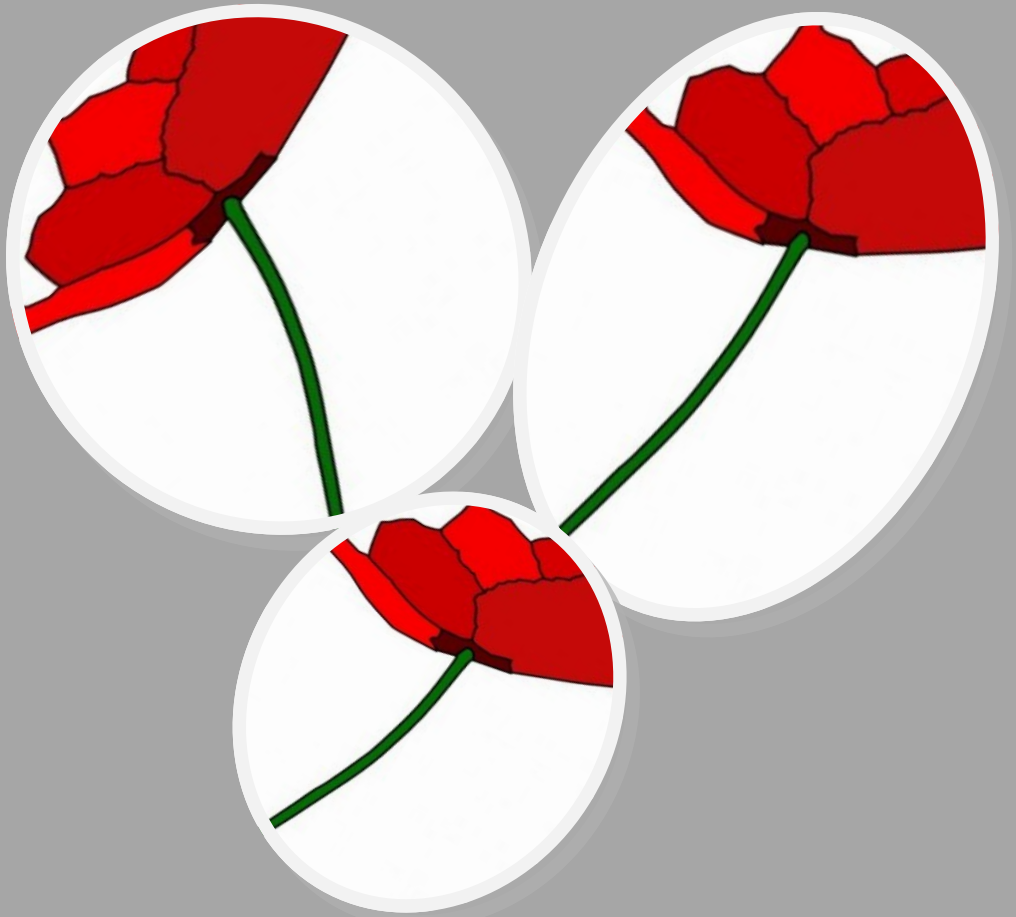


The Botolph Bell



**The Magazine for the Parish of Heene
November 2017**

What's on at St. Botolph's

Look at the regular events we hold in addition to our
Sunday morning services:

<u>Monday</u>	10.00 am - 11.00 am	Gentle Exercise Class
<u>Wednesday</u>	10.00 am - 11.45 am	U3A Inspired Instrumentalists
	12.00 pm - 1.00 pm	Instrumental Groups
	7.00 pm - 8.00 pm	Tai Chi
	8.00 pm - 9.00 pm	Kick Boxing
	8.00 pm - 9.00 pm	Oriental Dancing
	7.30 pm - 9.00 pm	Bell Ringers' practice
<u>Thursday</u>	7.30 pm - 9.00 pm	Spring into Soul Community Choir
<u>Friday</u>	10.15 am	Prayer group
	10.30 am - 12 noon	Coffee morning
	11.00 am - 11.30 am	Home Ed. Recorder Group
	7.30 pm - 9.15 pm	Choir Practice

All events are weekly unless otherwise stated and contact details are shown at the back of this magazine.

St. Botolph's Church, Lansdowne Road, Worthing BN11 4LY
[entrance on Manor Road for most mid-week events]

Services

Friday, 3rd November	10.15am	Prayer Group
Sunday, 5th November	10.00am	Sung Eucharist
Friday, 10th November	10.15am	Prayer Group
Sunday, 12th November	10.00am	Sung Eucharist (Remembrance Sunday)
Friday, 17th November	10.15am	Prayer Group
Sunday, 19th November	10.00am	Sung Eucharist
Friday, 24th November	10.15am	Prayer Group
Sunday, 26th November	10.00am	Sung Eucharist
Friday, 1st December	10.15am	Prayer Group
Sunday, 3rd December	10.00am	Sung Eucharist (First Sunday in Advent)

Thought for the Month

The Diocese of Chichester has designated the period up until November 2017 as the “Year of the Bible” and this is again reflected in our opening article this month.

The Four Gospels: **Four differing accounts of the life of Christ.**

It is important that Christians have confidence in the Four Gospels.



Our faith does not come to us from someone’s vision or from a book, but from a human life lived in a period of history, a life attested by witnesses who lived with him and knew him: the life, that is, of Jesus of Nazareth who we believe was the Word, the Wisdom, the Image of God. *(For further explanation I strongly recommend Archbishop Rowan Williams’ book Meeting God in Paul: SPCK Press.)*

How do we know about him? We have the Gospels. Are the texts authentic? They have been subject to minute, critical, scholarly examination - and it is noteworthy that there are other contemporary so-called gospels which were not included in the Bible as not being sufficiently reliable. The texts we have are in Greek, but it is believed that behind the Gospel of Mark (the earliest) there is, a spoken tradition: indeed Papias, a second century Bishop of Rome, said that Mark (in prison) wrote down what Peter told him about the life and teaching of Jesus, “but not in order”. This may or may not be true but it does suggest an aural tradition behind the text, a claim strengthened by some of the clumsy Greek. Mark’s Gospel is about the impact God has made upon the world through the life of Jesus, the corresponding impact the world in its wickedness made upon Jesus, and the need for people to be receptive to the love of Jesus and to continue to make

The Botoolph Bell

November 2017 54th Edition

Keep living your life...

...with support when you need it



Abbeyfield WORTHING

There's no need to be lonely, isolated and tired of running your own house.

Abbeyfield Worthing is *the* alternative, highly affordable answer to secure, assisted retirement living.

- No upfront purchase or investment, just a cost effective monthly rental
- Enjoy secure independence within a 'family based' community
- Bring your own possessions and favourite furniture
- All inclusive package including delicious home cooking
- The freedom to come and go as you please

We have two houses, each with a House Manager. Each house has attractive gardens, a lift and a communal conservatory. The rooms are bright and airy and all have en suite bathrooms. We are conveniently situated close to shops, buses, surgery and the seafront.

To find out more about our all inclusive, alternative solution to retirement living call our manager on 01903 208665



Seascapes, 8 Southey Road, Worthing BN11 3HT
enquiries@abbeyfield-worthing.co.uk
www.abbeyfield-worthing.co.uk

Abbeyfield

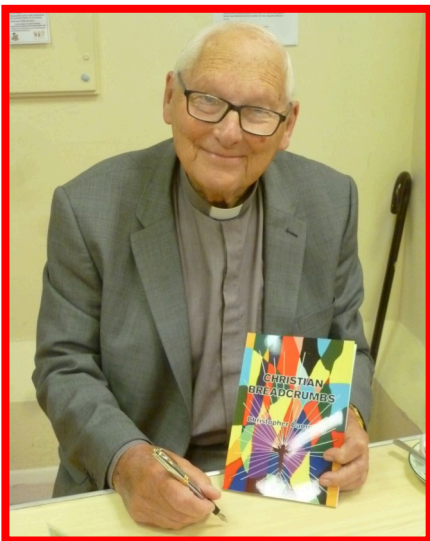
the impact of his love upon the world.

Matthew's and Luke's Gospels make much use of Mark's, though they do not hesitate to interpret it to suit their particular purposes. They both use another source which is mainly concerned with Jesus' teaching; and each has his own particular source of information. Matthew was a Jew who may have been writing for a Jewish turned-Christian community. He writes with sad anger about the failure of the religious authorities to recognize Jesus as their Christ and he keeps quoting texts from the Old Testament to show how these foreshadow the events of Jesus' life. Luke was a Gentile doctor, a travelling companion of St. Paul, who wrote the story of Jesus with the subsequent story of the work and spread of the early Church (The Acts of the Apostles). He wrote in elegant Greek, emphasising throughout the strong compassion of Jesus, the perfectly good man.



The Fourth Gospel is different. It reads like a meditation on the profound truths of the nature of Jesus, as shown by the events of his life and his teaching. It may have been written by a member of a Christian community taught and trained in the beliefs and practice of Christianity by St. John himself, the special friend of Jesus who was present at his crucifixion and thought of Jesus as if he were 'the love of God in action.'

We can experience the impact of this love as we read and meditate on these wonderful books.



The Very Revd Christopher Campling

This article is taken from 'Christian Breadcrumbs' by Christopher Campling, Dean Emeritus (retired) of Ripon Cathedral, who lives locally. His book is now on sale for £5 and profits will go to support a local hospice.

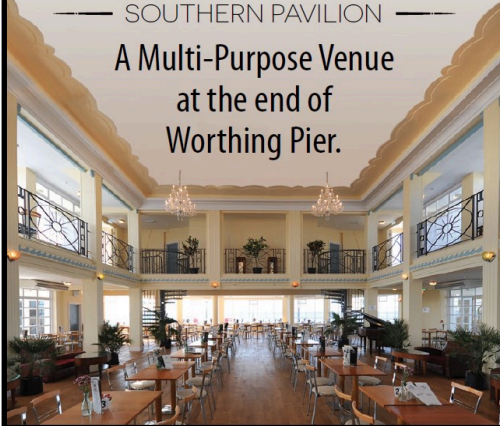
If you would like to buy a copy please contact Nick Le Mare:
phone 01903 241673 or
email nidi-lemare@virginmedia.com



WORTHING PIER

SOUTHERN PAVILION

A Multi-Purpose Venue
at the end of
Worthing Pier.



This outstanding Art Deco Listed Building incorporates a daytime Café with the best views on the South Coast.

The Venue is also used for Weddings, Music Events, Conferences, Corporate and Christmas Parties.

For more details: www.worthingpier.co.uk

Worthing ICE RINK

STEYNE GARDENS



FRI 20TH OCT
TILL
SUN 28TH JAN

CAFÉ - CHILDRENS PARTIES
WHEELCHAIR FRIENDLY

@worthingicerink
Worthing Ice Rink

WWW.WORTHINGICERINK.COM



- Commercial cleaning
- Domestic cleaning
- De-cluttering of offices and homes

Competitive pricing, professional,

Friendly and reliable

Why not give us a call to see if we can
lower your cleaning cost?

Contact us today for a **free** quote.

Telephone 07702 700729

Email: Claire.gregory@chucksaway.co.uk

Website: www.chucksaway.co.uk

Company number 09313921. Chucks Away Limited
is covered by Public Liability Insurance

Clean Cut Gardening Services

- Mowing
- Hedge cutting
- Tree surgery
- Turf laying
- Shingle & bark laying
- Weed killing
- Power washing patios & drives
- Gutter clearance
- Rubbish & house clearance

Friendly, reliable & fully insured

01903 899592

www.cleancutgardening.co.uk

lukebrice@cleancutgardening.co.uk



S
A
T
U
R
D
A
Y
2nd
D
E
C
E
M
B
E
R



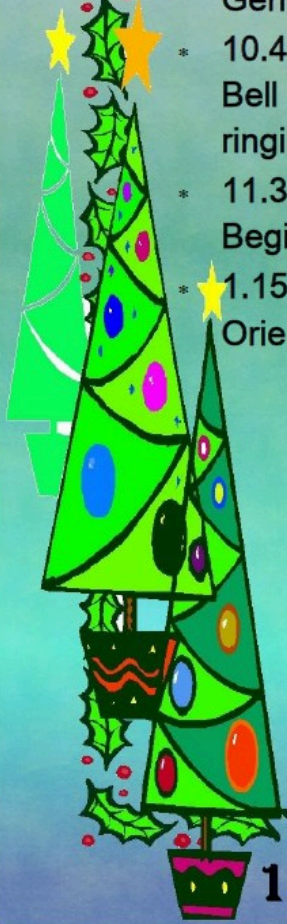
ST. BOTOLPH'S CHURCH
ADVENT FAIR

- * 10.45 - 11.15
Gentle Exercise class 'drop-in'
- * 10.45 - 12noon
Bell Tower open - try your hand at
ringing one of our church bells.
- * 11.30 - 11.45
Beginners' Recorder Group
- * 1.15- 1.30
Oriental Dance demonstration

Mulled wine and mince pies
Soup and roll lunches
Other light refreshments

Stalls: Cakes ~ Bottle stall ~
Books ~ Gifts & Toys ~
Bric-a-brac.

Grand Raffle



10.30 AM - 2.00 PM

A TRULY INDEPENDENT
FAMILY FUNERAL DIRECTOR



IAN HART Funeral Service Ltd



A.J. Pratley
(Great-Grandfather)
1869-1926



A.G. Pratley
(Grandfather)
1906-1991



Ian Hart
Dip. FD. L.M.B.I.F.D.



Jane James
Cert. FP. F.I.F.D.C.



Sam Hart

- Private Chapels of Rest
- Flowers
- Pre-paid Funeral Plans
- Monumental Masonry
- Catering
- British Fleet
- Horse Drawn Hearse
- Bereavement Counselling Service
- Service Chapel and Catering suite



Customer
Care Award
WINNER 2015



*As a small family run company we pride ourselves
on offering a personal and professional service*



24 hour service to all areas

01903 206299

92-94 Broadwater Street West, Worthing, BN14 9DE
(opposite Broadwater Green)

ian@ianhartfuneralservices.co.uk
www.ianhart.org



**THE GORDON CHAPEL AND CATERING SUITE
20 SOMPTING ROAD, WORTHING, BN14 9EP**

Who's buried in Heene Cemetery?

Walter Sydney Stevens (1899 – 1918)

70245 Private
WALTER SYDNEY STEVENS

The Queens

23rd August 1918 age 18

Called to his heavenly rest

Thy will be done



Walter was born in Shoreham in 1899 and christened there on 4th September 1900. His father, Henry, was from Hounslow and his mother, Alice, from Salisbury. Henry was a painter and decorator.

By 1901 the family was living at 25 The Drive, West Worthing. Walter was the youngest of five children, the eldest, Ethel, 9, born Hounslow, and the others, William, Alice and Beatrice, born, like Walter, in Shoreham. They were at the same address in 1911, with one more child, Daisy, aged 7.

On the 26th April 1915 Walter started as a booking clerk at West Worthing Station on 10 shillings a week.

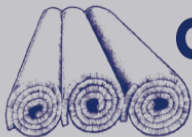


He enlisted in the Queen's (Royal West Surrey) Regiment, 10th Battalion at Brighton.

The 10th Battalion left England for France in March 1918 and fought at Ypres and on the front line, having heavy casualties.

Walter died of wounds at Tankerton Military Hospital, near Whitstable, on 23rd August 1918. He was awarded the Victory and the British Medals.

Liz Lane



GORING ROAD CARPET CENTRE

01903 700567

Checkatrade.com
Where reputation matters

www.goringroadcarpets.co.uk

ALL YOU PAY FOR IS THE CARPET

- ★ Free fitting
- ★ Free grippers
- ★ Free delivery
- ★ Free underlay
- ★ Free door bars
- ★ Free estimating



10 WALLACE PARADE, GORING ROAD, WORTHING, BN12 4AL

Warehouse/showroom: Unit 2, Nairn Business Centre, Artex Ave, Rustington BN16 3LN. Tel: 01903 773319

54 High Street, Billingshurst, RH14 9NY. Tel: 01403 783159

*Free offers apply to carpet sales only, minimum order value £200. Excludes remnants, vinyls, hard floors and budget range carpets. Terms & conditions apply

Rincón de Pepe



TAPAS BAR

IF YOU ENJOYED TAPAS IN SPAIN
THIS SUMMER, WHY NOT TRY THEM
NEAR HOME, AT YOUR LOCAL SPANISH
TAPAS RESTAURANT IN WORTHING?

OUR MENU OFFERS AN IMPRESSIVE
SELECTION OF MOUTHWATERING,
FRESHLY PREPARED TAPAS AND OUR BOARD
HAS A NUMBER OF DAILY SPECIALS!!

WE ARE NOW FULLY LICENSED!

AT 52 SOUTH STREET TARRING WORTHING BN14 7LS

WE GUARANTEE YOU A WARM SPANISH WELCOME!!

COME AND SEE US SOON AND

IF YOU CANNOT STAY YOU CAN ALSO TAKE OUR TAPAS HOME!!

Telephone Pepe on 01903 234 125

Friends of Heene Cemetery

**Remembrance Gathering at Heene Cemetery
on Saturday 11th November 2017 at 12 noon.**



Eight Commonwealth War Graves Commission graves and 24 family memorials of war dead are marked with information sheets about the men who gave up their lives for us during WWI and WWII. There is one minute's silence, the Last Post and Reveille are played and wooden crosses and poppies are placed on the graves.

For further information about Heene Cemetery please contact:
Sue Standing – email: suestanding@hotmail.com, mobile: 07771966846
or follow Heene Cemetery on Facebook
<https://www.facebook.com/Heene-Cemetery>

CONSERVATION ♦ RESTORATION
of
ANTIQUÉ CLOCKS
and
TIN PLATE TOYS & AUTOMATA

- ✻ *CLOCK RESTORATION AND REPAIRS*
- ✻ *CLOCKWORK MODEL REPAIRS*
- ✻ *3D PRINTING FACILITIES*

FOOTPLATE DAYS & WAYS LTD **01903 207587**
E-MAIL: lapendules@gmail.com **07773 862004**
FREE ESTIMATES

ALMA COGAN

In the thirty years I lived in St. Michael's Road I knew that the house at the corner of Lansdowne Road and Downview Road was the one time home of 1950s singing star Alma Cogan. It had been mentioned in conversation by people who had lived in the area a lot longer than me and maybe the story had become part of local legend.



This was brought home to me on 22nd September when a blue memorial plaque was unveiled near the front door of the house, and I couldn't resist going along to see it. The plaque, organised by the Worthing Society, was unveiled by showbiz star Lionel Blair and was paid for by the Alma Cogan International Fan Club.

Alma was born in Whitechapel, London, in March 1932 of Jewish Russian-Romanian decent. Her parents moved out of London to first Slough, then Reading and next in the 1940s to Worthing. She lived with her parents, her sister Sandra and her brother Ivor. Her father had moved here to buy a haberdashers' shop in Warwick Street where the family lived upstairs, later moving to the house in Lansdowne Road. Alma liked singing and during her time at school she entered singing contests. Aged 11, she won a prize in the Sussex Queen of Song Contest in Brighton.

Alma had a good voice and she was talent spotted when she was 16. She had ideas of becoming a band singer but was told she was far too young. After leaving school she went to study fabric and dress design at Worthing Art College and did her singing at popular tea dances in the area, and also back stage at the Connaught Theatre.

She successfully auditioned for the chorus in the musical 'High Button Shoes' in London in 1949 and later obtained a part in a West End revue called 'Sauce Tartare'. She then became resident singer at the fashionable Cumberland Hotel, Marylebone, where she was spotted by a record producer from HMV Records in 1952, and given a recording

once a resident of Heene

contract. When the studios started recording sessions she was asked to sing ballad songs which did not really work out. Later during recordings she developed 'giggles' in her voice and producers asked her to record more light hearted up-tempo songs. She became known as 'the Girl with a Giggle in her Voice'.

As she was continually travelling to London, her father decided to help his daughter's career by moving the family back there, and they lived in a flat in Kensington High Street.

Her recordings from 1952 were mostly covers of hits by singers like Jo Stafford, Rosemary Clooney and Patti Page. In 1954 she had her first Top Twenty hit, 'Bell Bottom Blues', followed in 1955 by 'I Can't Tell a Waltz from a Tango' and then later that year 'Dreamboat', which reached No 1 in the charts. Other hits followed in the 1950s - eighteen UK chart entries in all.

During this time she was vocalist on the hit BBC radio show 'Take it from Here'. At the height of her popularity she frequently appeared on television and had her own TV show. She was noted for her hooped skirts with sequins and figure hugging tops, some designed by herself; never worn twice. In 1959 she topped the bill in a Sunday concert at the Worthing Pier Pavilion and later that year starred in the Christmas pantomime 'Goldilocks and the Three Bears' at the Connaught Theatre.



In the 1960s the UK music scene changed with the advent of the 'Liverpool Sound' and Alma's popularity waned whilst that of the Beatles grew. She appeared with the Beatles on the TV show 'Ready Steady Go' and subsequently struck up a friendship with John Lennon.

Alma continued to make records and had hits in Sweden, Israel, Denmark, India and especially in Japan. Unfortunately illness took

hold and she collapsed during a concert tour in Sweden and died of cancer in hospital in London in 1966 aged 34.



Local people and fans gathered in the front garden of her old home to listen to the speeches by Geoff Bowden of the British Music Hall Society, who organised the unveiling, Susan Belton, conservation group chairman of the Worthing Society, and Worthing Mayor Alex Harman. Then an emotional and tearful Lionel Blair, who had entertained the crowd with many anecdotes about his friend Alma, unveiled the plaque.

Nick Le Mare

Ferring ^{Hearing} Centre

INDEPENDENT HEARING AID AUDIOLOGISTS
Personal Hearing Care at our Clinic or in your Home

FREE HEARING HEALTH CHECK

Call for an Appointment
01903 500636

- ★ 14 Day Trials of latest Hearing Aids
- ★ Competitively priced Hearing Aids with Lifetime Aftercare
- ★ 60 DAY Money-Back Guarantee if not completely satisfied



Angie McConnell MRSC
Senior Audiologist

MICROSUCTION EARWAXREMOVAL CLINIC OR HOME VISITS FROM £40

32 Ferring Street, Ferring, Nr Worthing, BN12 5HJ
OPPOSITE THE LIBRARY – FREE PARKING IN FRONT
OPEN SATURDAY MORNINGS – FULL DISABLED ACCESS

Email: info@ferringhearingcentre.co.uk
www.ferringhearingcentre.co.uk



Money making for Macmillan



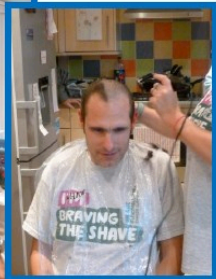
Coffee morning organiser Christine Roberts (right), with helpers Cleo (on left) and Ann.

Nearly £600 was raised for the Macmillan Cancer Care charity by two events organised by St. Botolph's congregation members recently.

The St. Botolph's room was filled with cheerful chatter on Friday, 29th September when many visitors came along to the Macmillan Coffee Morning and enjoyed a hot drink and some of the delicious home-made cakes and savouries available. More cakes were on sale, so people were able to take some goodies home as well and the event raised a total of £140.

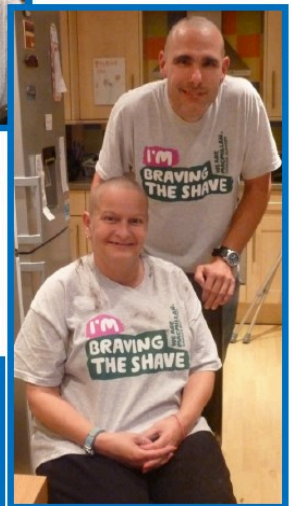
Just three days later, St. Botolph's choir member Dominic Smith and his girlfriend, Kirsten, made a rather more drastic move to raise money for the charity - by having their heads shaved!

Between them they amassed - thanks to generous donations from friends, family and



work colleagues - about £450 in sponsorship money.

Kirsten took charge of the clippers to rid Dom of his hair but, when it came to her turn,



her nine-year-old son, Thomas, took over with enthusiasm (and great care)! A great effort all round!

Nature Watch

I, like so many folk, am wondering where the summer has gone! It most certainly has not been helpful to butterflies, dragonflies and the like. I have seen mainly red admirals:



There have been holly blues flitting around the garden, some small whites and gatekeepers, but not in the numbers nor frequency of past years.



This Painted Lady arrived briefly in the garden to my surprise and delight.

I've tried to include in the garden plants and flowers which are good for insects. The bees have really enjoyed the Hebe which I hadn't thought would be so useful to them.



Should you like to improve the plants that insects and birds like do look on the internet or speak to garden centre staff who can guide you.

Autumn 2017

I always look forward to having visiting dragonfly and damselflies to our pond. This year has been very disappointing. This red damselfly seems to have favoured the lily.



The common darter dragonfly makes it every year so far. Long may that continue especially if they bring their friends along!



Well now it is into Autumn to watch for the migrating birds who prefer our climate and who spend at least some of the winter months with us.

David Burt dd.aburt@btinternet.com

The views expressed in this magazine are not necessarily those of the editorial team.

Please remember to mention The Botolph Bell if you use our advertisers.

Near 0% bank interest rate

FED UP WITH YOUR CASH ISA RETURNS?

Let us show you
low risk alternatives

BOOK YOUR INITIAL CONSULTATION
AT OUR EXPENSE

Contact Hilary Peyman

01903 882007

or visit

www.themellorpractice.co.uk

— THE —
MELLOR PRACTICE

Independent Financial Advice

The Mellor Practice Ltd is an appointed representative of Lighthouse Advisory Services Limited which is authorised and regulated by the Financial Conduct Authority.

The Mellor Practice Ltd, Registered in England, No. 10567558

Registered Office: 41b Beach Road, Littlehampton, West Sussex, BN17 5JA

The value of your investments can go down as well as up
so you could get less back than you invested.

Sight Support Worthing



BECOME A MEMBER FREE OF CHARGE

Sight Support Worthing, formerly known as Worthing Society for the Blind, is a registered charity that was first established in 1910 and is believed to be the oldest surviving independent charity in Worthing.

The objects of the charity are to promote the relief, general welfare, entertainment and provision of services, for persons who have sight impairment and are living within the boundaries of the Borough of Worthing. Membership of the charity is not restricted to those who have been registered as sight impaired or severely sight impaired. All those who have a register-able eye condition which cannot be successfully treated or corrected are welcomed, and advice and support is gladly provided to anyone who is concerned about their vision. If you know anyone who has vision impairment and might not be aware of these services, please pass on these details or contact the charity directly for further information.

PLEASE CONSIDER BEING A VOLUNTEER & HELP

Do you enjoy driving and want to make a difference to the lives of vision impaired people?

Volunteer Drivers are needed to transport vision impaired people from Worthing to hospital appointments at Southlands. Sight Support Worthing, with the help of volunteers, provide a one to one driving service for their members. If you would like to find out more, please call in or telephone.



SIGHT SUPPORT WORTHING

48 Rowlands Road, Worthing, BN11 3JT - phone 01903 235782

Email: info@sightsupportworthing.org.uk

Web: www.sightsupportworthing.org.uk

**Compassionately
caring for you**



**in the comfort of your
own home**

Personal Care in the Comfort of your Own Home

- Personal Care
- Live In Care
- Dementia Care
- Respite Care
- Palliative Care
- Medication Assistance
- Night care
- Domestic Help
- Companionship
- Driving
- Shopping
- Meal Preparation

For a friendly chat, call:

01903 389098

Email: worthing@gacarers.co.uk

Guardian Angel
carers

www.gacarers.co.uk

the office



23/24 New Broadway
Tarring Road
Worthing
West Sussex BN11 4HP
Tel: 01903 200000
Fax: 01903 820753
email: theoffice@ndirect.co.uk

Worthing's No.1 Secretarial Service
offering **Typing Service, Mailing Address and PO Box Hire to Telephone Answering and Call Handling**

- **Speedy Typing and Wordprocessing service** – quick turnaround at economic prices
- **Prepare reports, manuscripts, CVs, data bases, life stories and general correspondence**
- **Confidential Business Service and complete business support**
- **Starting a business? Come and visit us, serviced offices available**

Call us on **01903 200000**

CARTECH

(Autocentres) Ltd

TELEPHONE: 01903-248480

Servicing & Repairs

MOT Testing

Electrical & Diagnostics

Air Conditioning Repairs & Refilling

Tyres & Batteries

8 STATION PARADE, TARRING ROAD

Worthing, West Sussex BN11 4SS



Web: www.garagesinworthing.co.uk

Email: cartechworthing@btconnect.com

St. Botolph's Church and Rooms



are available to hire

and are suitable for many different occasions, including meetings, evening classes, music groups, etc.

St. Botolph's Room hire is just £10 per hour (with an additional charge for use of the kitchen). For further details, or to book, call Diane Le Mare, churchwarden, on 01903 241673



Heene Road Vets
passionate about pet care

When it comes to veterinary care, you want only the best for your pet. We understand that your pet is an important member of your family and we understand the

special bond you share.

At Heene Road Vets, we are committed to providing your pet with leading veterinary services in a caring and compassionate environment and we look forward to working with you to keep your pet healthy and happy, now and for years to come. Please look us up on www.heeneroadvets.co.uk or **telephone 01903 200187** for an appointment.

Or you can find us on Facebook www.facebook.com/heeneroad.vets

“

*Not only do my dogs
LOVE it... it's easy to
maintain their
weight and fabulous
condition.*

”

Free Local
Delivery!



NATURE'S BEST SUPER FOODS FROM IN THE RAW HELP YOUR CATS & DOGS TO THRIVE



If you are feeding your dog or cat the pet equivalent of over processed, chemically enhanced fast food, then STOP.

There is a better way, as nature intended, and as your pets were designed to eat.

If you haven't tried raw food before, start today and see the difference in your pets' health & wellbeing.

- 🐾 Complete raw meals
- 🐾 Specialist puppy & senior foods
- 🐾 Weight loss for cats and dogs
- 🐾 Healthy, natural treats
- 🐾 Marrow bones
- 🐾 Dog ice cream



NATIONAL DELIVERY OR LOCAL
COLLECTION POINT IN WORTHING

ORDER ONLINE TODAY WWW.INTHERAW.UK.COM



In the Raw c/o Unleashed, 32A Teville Road, Worthing BN11 1UG

Call 01903 211468 info@unleashed.uk.com

Who to contact

Churchwardens	Paul Wadey Diane Le Mare	01903 506855 01903 241673 churchwardens@virginmedia.com
Choir	Martin Didymus (choir librarian)	01903 202036 martin.didymus@virginmedia.com
Music at Heene Box Office	Nick Le Mare	01903 241673
Bell ringers	Liz Lane, Tower Captain	01903 501422 liz.13lane@gmail.com
Publicity Botolph Bell Magazine	Jackie Didymus, Co-ordinator	01903 202036 jackie.didymus@virginmedia.com
Botolph Bell Distribution	Rik Clay	01903 693587 rv.clay@ntlworld.com
Botolph Bell Advertising	Nick Le Mare	01903 241673 nidi-lemare@virginmedia.com
Friday Coffee	Sue Wadey	01903 506855
Parish Lunch Bookings	Christine Roberts	01903 527176
Prayer Group	Cleo Roberts	01903 823811
U3A Inspired Instrumentalists	Tony Tournoff	01903 208588 fairwaysmusic@btinternet.com
Tai Chi/Kick Boxing/ Oriental Dancing/Gentle Exercise	Shafi	07432 597647 shaf@whitecranemartialarts.co.uk
Spring into Soul Community Choir	Mike, Carol & Vanessa	01903 533402 or 07906 831291 info@springintosoul.co.uk
Home Ed. Recorder Group	Jackie Didymus	01903 202036 jackie.didymus@virginmedia.com

www.stbotolphsheene2015.com



@botolphworthing

Email: botolphbelleditors@gmail.com



Matthew Anthony

E S T A T E A G E N C Y

01903 608080 | www.matthew-anthony.co.uk

How does your agent market your property?



(approx 70 million views per month)



(approx 40 million views per month)

How about the 1 billion **You Tube** views per month?

Bring your property to the market with Matthew Anthony and not only get your home on the UK's two biggest property websites mentioned above, but have your very own professional HD video on YouTube

Instruct us now and mention 'botolphs bell' to get your property video for Free!

